



# OAKLANDS FARM SOLAR PARK

Applicant: Oaklands Farm Solar Ltd

Water Bodies Plan

January 2024

Document Ref: EN010122/APP/2.7

Revision: -





Figure 2.07: Water Bodies in a River Basin  
Management Plan Overview

Order Limits / Site Boundary

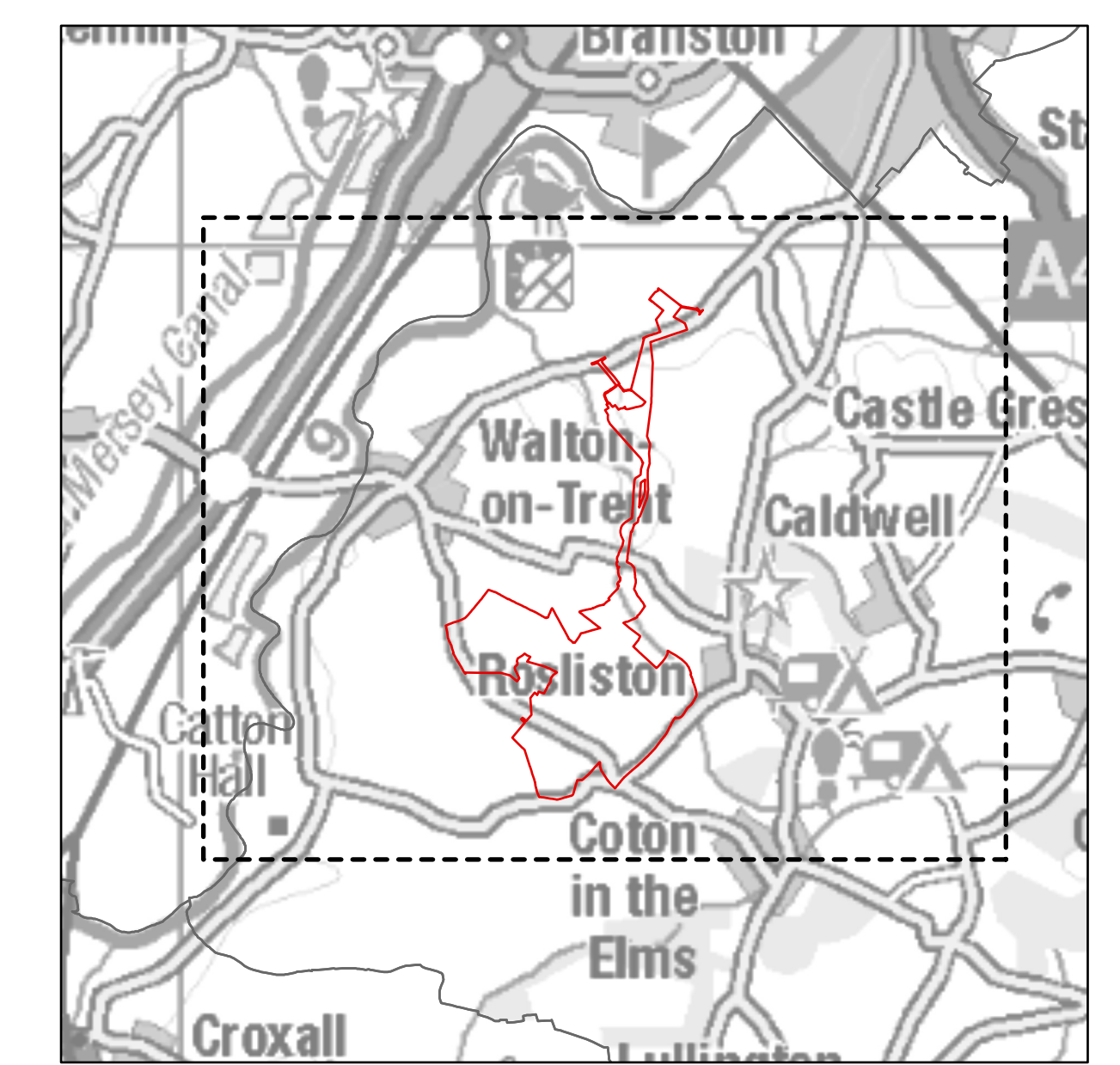
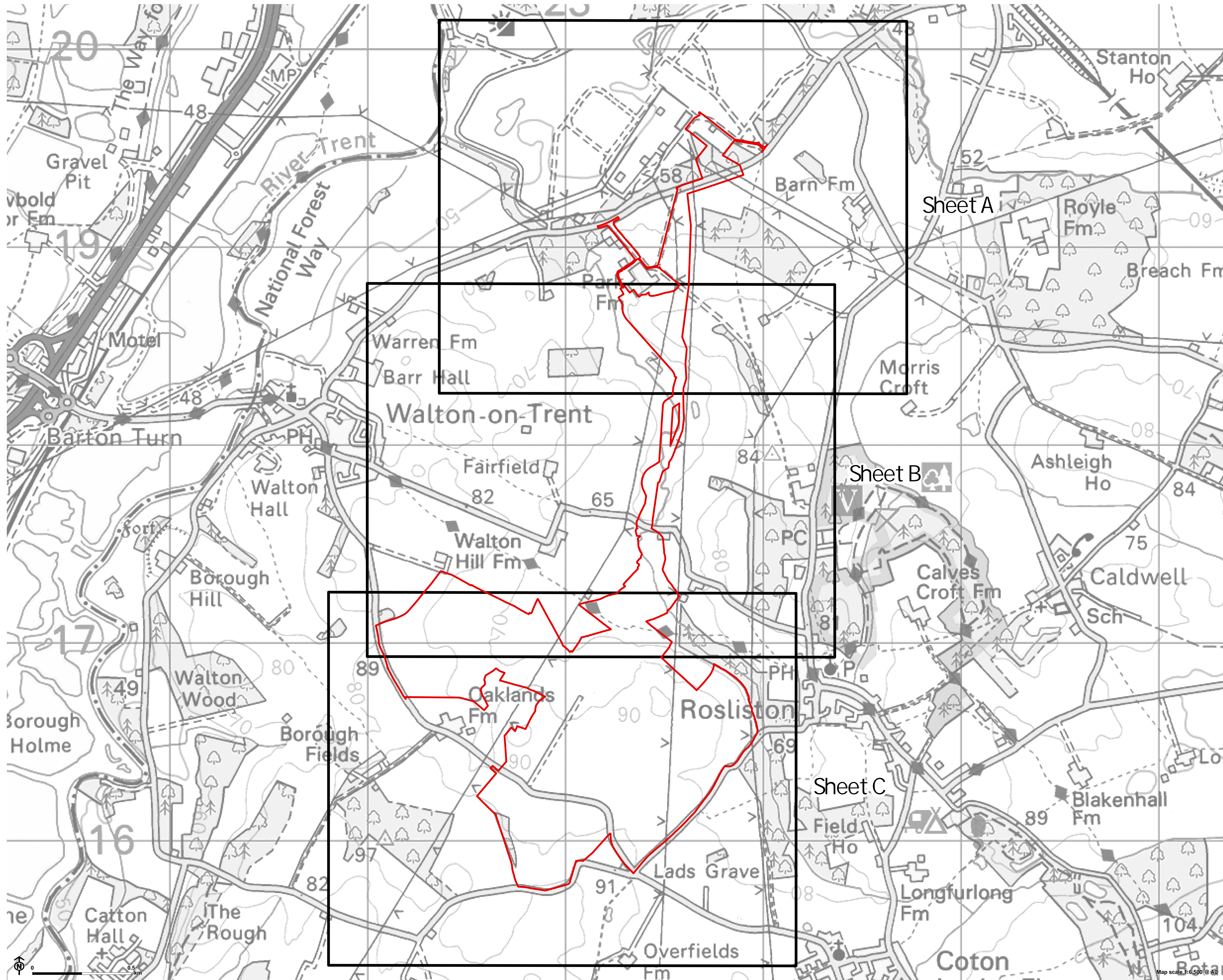
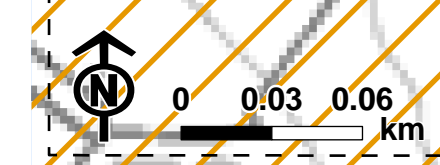
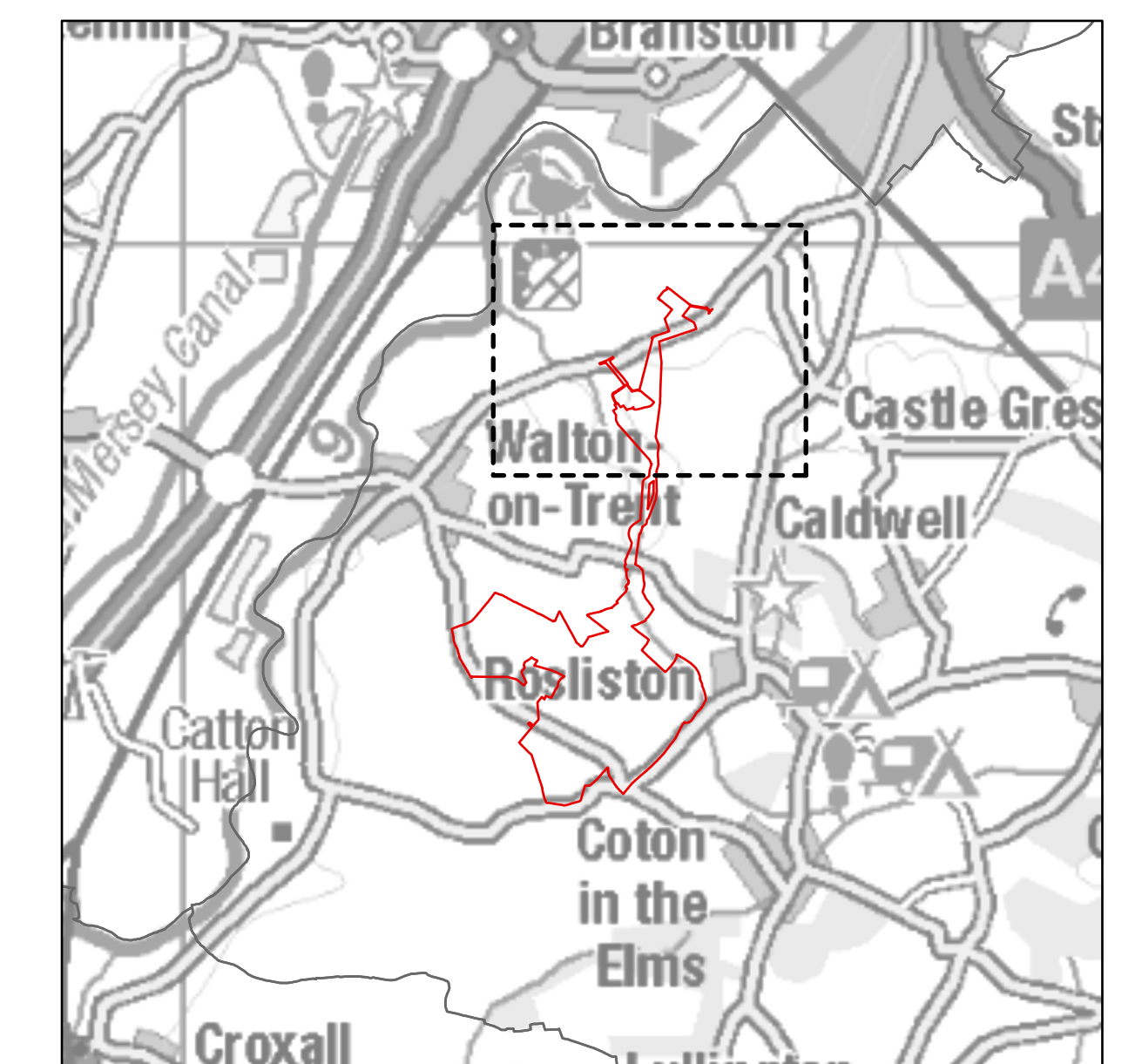
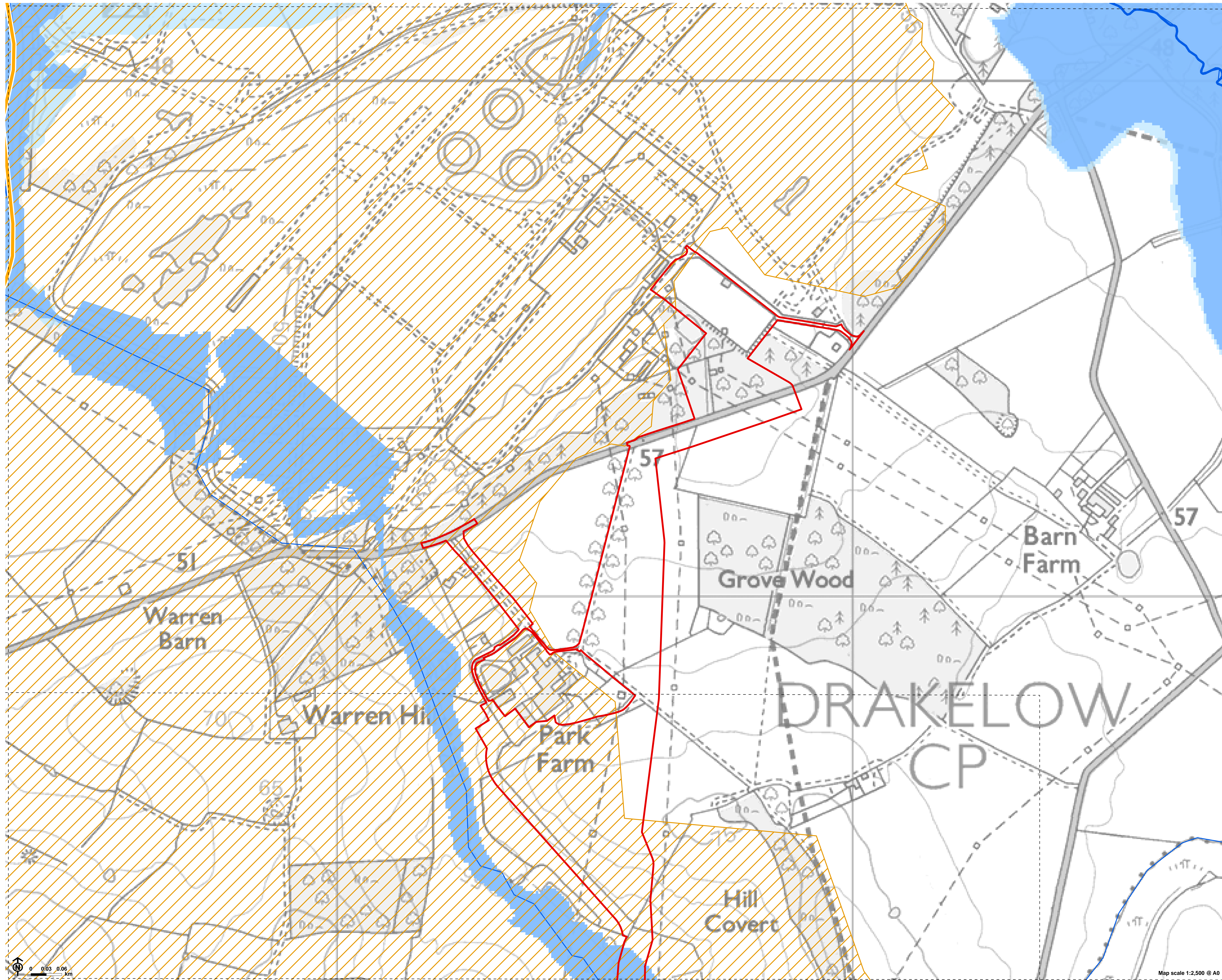






Figure 2.07a: Water Bodies in a River  
Basin Management Plan

- Order Limits / Site Boundary
- Main river
- Ordinary river
- Flood Map for Planning (Rivers and Sea)
- Flood zone 3
- Flood zone 2
- River Trent (from River Tame to River Dove)
- Trent catchment (from River Tame to River Dove)



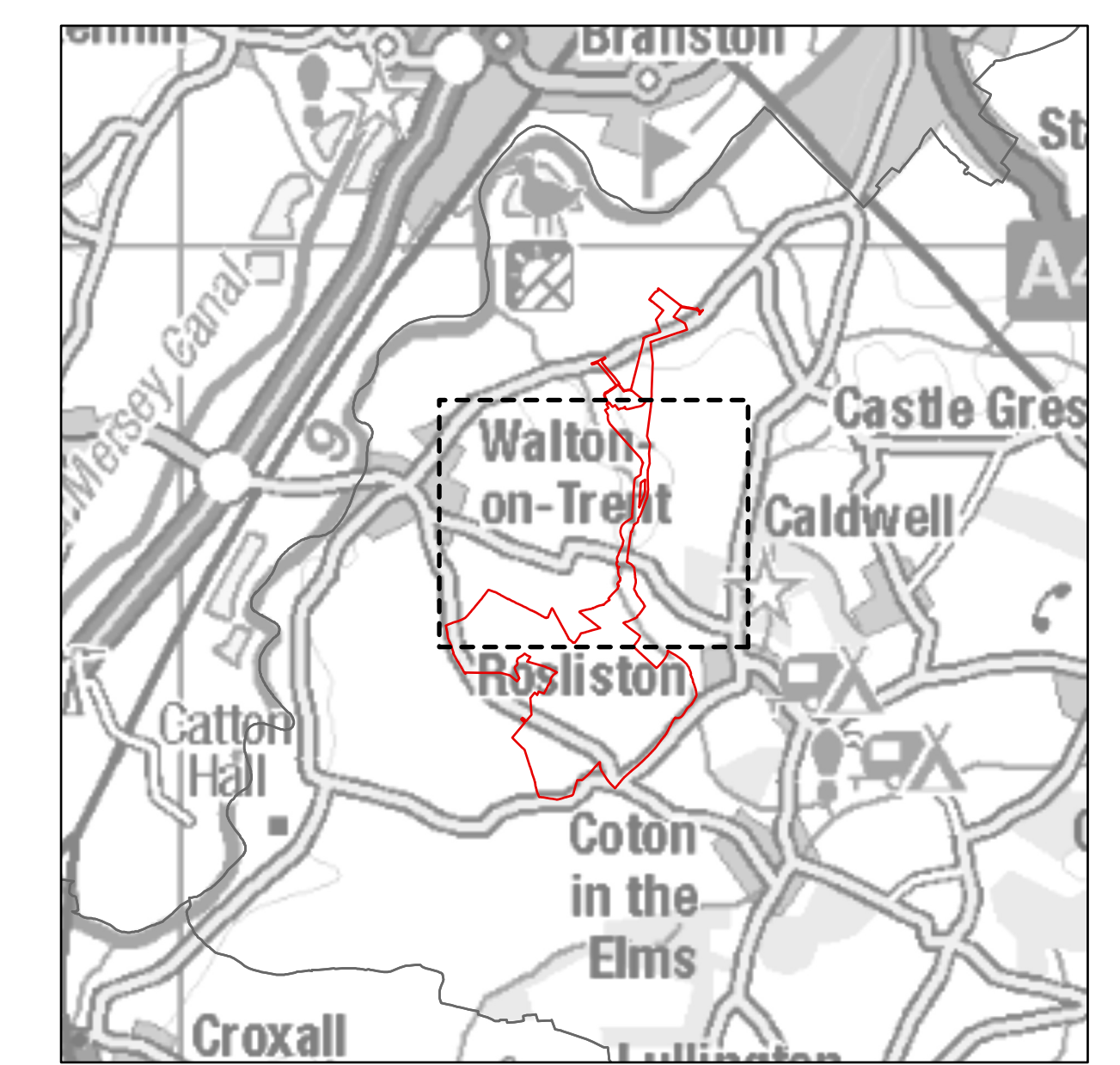
Map scale 1:2,500 @ A0



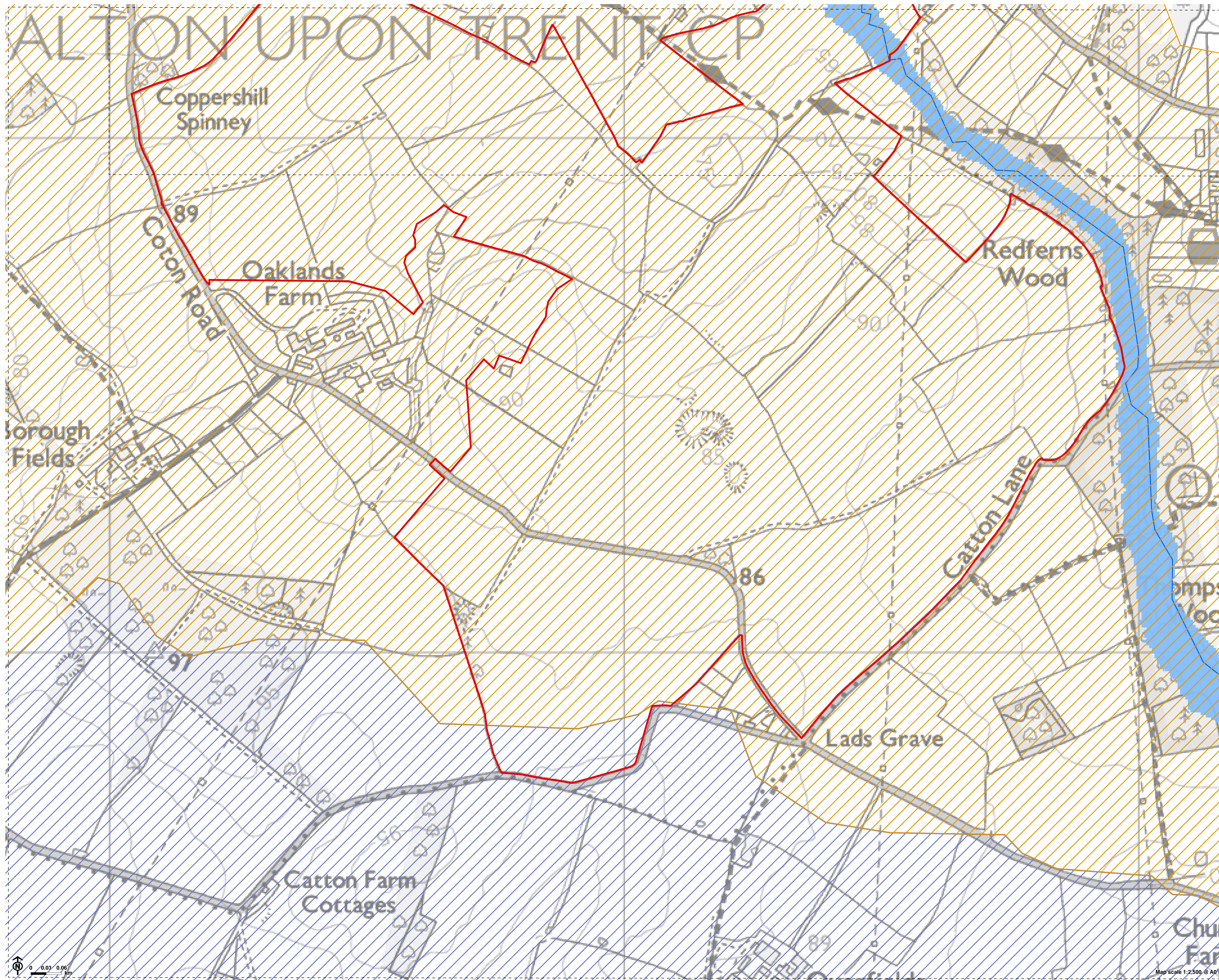


Figure 2.07b: Water Bodies in a River  
Basin Management Plan

- Order Limits / Site Boundary
- Ordinary river
- Flood Map for Planning (Rivers and Sea)
- Flood zone 3
- Flood zone 2
- Trent catchment (from River Tame to River Dove)





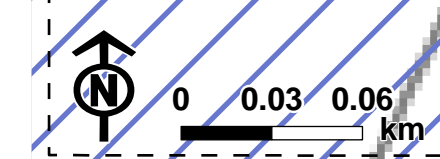
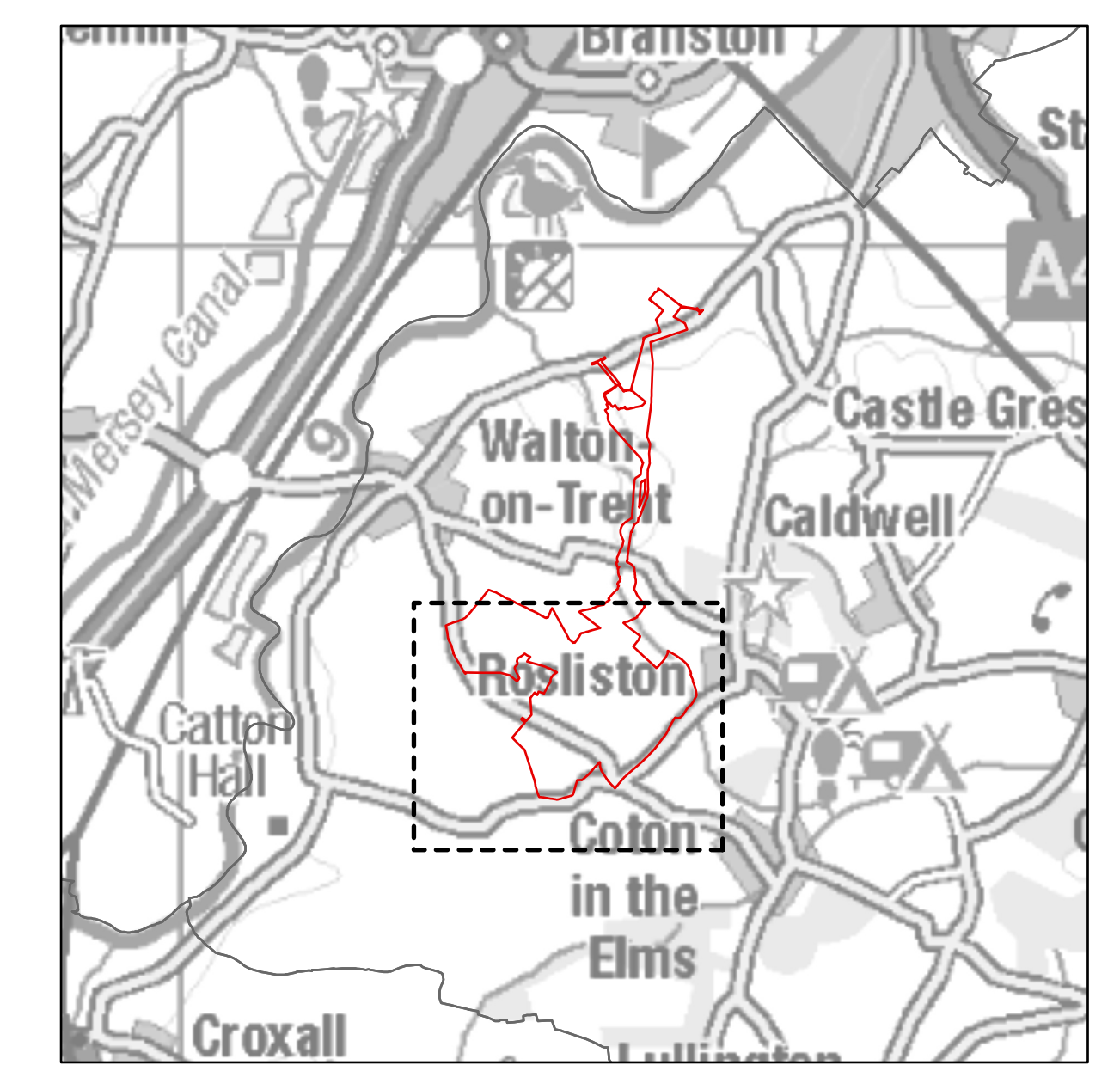


Oaklands Farm Solar Park  
for Oaklands Farm Solar Ltd



Figure 2.07c: Water Bodies in a River Basin Management Plan

- ▬ Order Limits / Site Boundary
- ▬ Ordinary river
- Flood Map for Planning (Rivers and Sea)
- Flood zone 3
- Flood zone 2
- Trent catchment (from River Tame to River Dove)
- Mease catchment (from Hooborough Brook to Trent)



Map scale 1:2,500 @ A0